

# PANORAMA

## P4 / P6



### Quick Start Guide

nektar

# INDEX

---

<b>INDEX</b>	<b>2</b>
<b>PANORAMA PHILOSOPHY</b>	<b>3</b>
<b>WHAT'S IN THE BOX</b>	<b>4</b>
<b>WHAT'S ONLINE</b>	<b>4</b>
<b>PANORAMA OVERVIEW</b>	<b>5</b>
<b>POWER &amp; SETUP</b>	<b>8</b>
Connecting to a computer	8
Using an external power supply	8
<b>INTERNAL MODE</b>	<b>9</b>
Getting around	9
Global Settings	11
Assigning Controls	12
Motorized fader	14
Pads	15
<b>REASON</b>	<b>17</b>
Driver & download	17
Getting around	19
Mixer mode	21
Instrument mode	22
Transport mode	23
Remote override	24
Motorized fader	25
Using pads	25
<b>CLEANING &amp; MAINTENANCE</b>	<b>26</b>
<b>FACTORY RESET</b>	<b>26</b>
<b>ABOUT</b>	<b>26</b>

# PANORAMA PHILOSOPHY

---

Thank you for buying our Panorama controller keyboard. Panorama is a very powerful instrument and controller keyboard that, combined with your DAW, will make you experience musical creativity in a new way.

What makes Panorama different is our intense attention to workflow and insistence that a controller keyboard should be as easy to use as integrated hardware systems. Our commitment to simplicity and efficiency makes Panorama highly transparent to use regardless of whether you operate it as a traditional MIDI controller, programming zones and MIDI messages, or use our dedicated communication protocols to control supported software such as Reason by Propellerhead Software.

And while controller hardware can never be as flexible as the software it controls, we provide a well thought-out set of controls and buttons in a logical layout that makes it easy to find exactly what you need. Our ultimate goal with Panorama is to make your experience in the studio and in live performance as intuitive and expressive as possible.

In addition, Panorama is field-updatable via USB. This means we can adapt it as software is updated or changed. Future versions of our firmware and drivers will be available to registered users. So remember to register your product!

We hope you will enjoy playing, using and being creative with Panorama as much as we have enjoyed creating it.

The Nektar Team

# WHAT'S IN THE BOX

---

Please take a moment to check the items we supplied in the box, just to make sure it's all there. Here is what you should have found:

- Panorama keyboard x 1
- Printed version of this Quick Start Guide x 1
- USB cable (standard) x 1
- USB Standard-A to Micro-B cable x 1
- Cotton cleaning cloth x 1

If any of the above was not included please let us know via email: [stuffmissing@nektartech.com](mailto:stuffmissing@nektartech.com)

# WHAT'S ONLINE

---

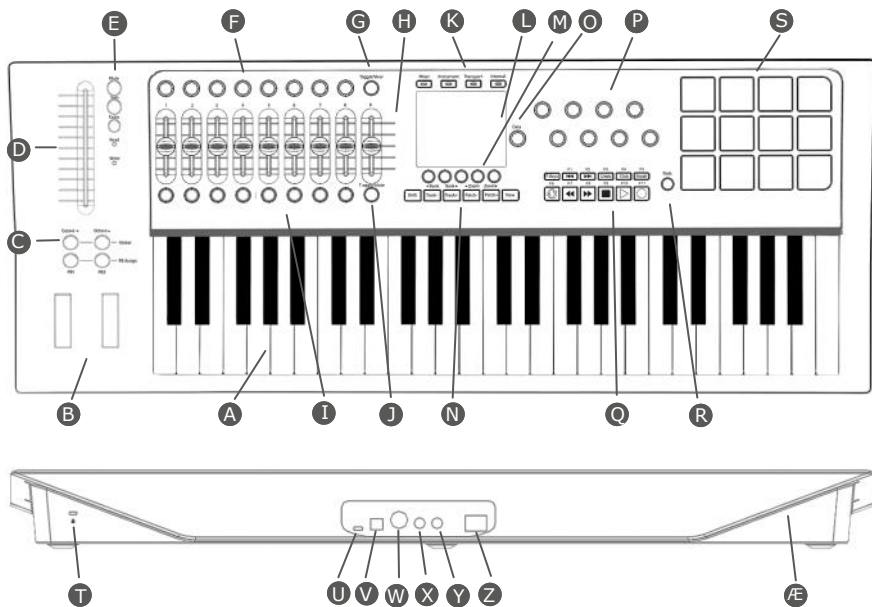
Additional documentation, drivers, and support software are available online, which is also where you will find any future firmware updates. If you plan to operate Panorama with a computer, make sure to register Panorama to get access to the extra material. If you plan to use Panorama without a computer, we still recommend you register Panorama so you can be kept up to date with new firmware releases.

Here is the internet address to our product registration page:

<http://www.nektartech.com/registration>

# PANORAMA OVERVIEW

Here is a brief overview of all the parts of Panorama to which we will refer in the guide. Before you jump in and start using Panorama, we recommend you get acquainted by identifying each called out part on your unit.



- A** 49 or 61 velocity-sensitive keys with monophonic aftertouch
- B** Pitch bend and Modulation wheels. Both are MIDI-assignable.
- C** **OCTAVE DOWN / UP** and **PB1 / PB2** performance buttons. Press both **OCTAVE** buttons at once to access the global menu. Press both **PB** buttons at once to select their functions.
- D** 100mm Alps motorized fader
- E** **SOLO** and **MUTE** buttons (MIDI-assignable) plus **FADER** select button to bring menu for motorized fader and buttons into view. Status LEDs for read/write modes when applicable
- F** Eight MIDI-assignable encoders
- G** **TOGGLE/VIEW** button: Used to view MIDI assignments in Internal mode. Toggles between assignments of all eight encoders when used with dedicated communication protocols.
- H** Nine MIDI-assignable 45mm faders
- I** Eight MIDI and ASCII-assignable LED buttons
- J** **TOGGLE/MUTE** button: Mutes MIDI output in Internal Mode. Toggles between assignments of all eight LED buttons when used with dedicated communication protocols.
- K** Four Mode buttons. Used to switch between Mixer, Instrument, Transport and Internal modes but also double as each mode's "home" or "back" button. When used without our dedicated communication protocols only Internal mode is selectable.
- L** High-resolution TFT display
- M** Five menu buttons. Their functions always correspond to the menu label at the bottom of the TFT display.
- N** 6 MIDI- and ASCII-assignable buttons. When used with our dedicated communication protocols they act as navigation buttons for selecting the DAW track, the patch on instruments, bank switch, etc.
- O** Data encoder for changing values for parameters and navigation. Also used as an extra MIDI encoder in some menus.
- P** Eight MIDI-assignable encoders
- Q** Eleven MIDI- and ASCII-assignable buttons, plus a **SHIFT** button (labeled F-Keys) which gives access to a total of 22 assignments. When used with our dedicated communication protocols the buttons are assigned automatically to 11 transport buttons, and the **F-KEYS** button gives access to 11 user-configurable MIDI or ASCII commands.

- R** Pads select button. Gives quick access to the menus for the pads in any mode.
- S** Twelve velocity- and pressure-sensitive pads, assignable to MIDI and ASCII commands.
- T** Kensington lock
- U** USB Micro-B connector. This port is used for external power. You can connect an external USB power supply (optional) or a second USB port on your computer (cable included).
- V** USB Standard-B connector. Main USB port for power and data to and from your computer. The port powers the entire unit except the motorized fader which needs a second power source via the USB Micro-B connector, as mentioned above.
- W** MIDI Out jack for connecting any external MIDI equipment. MIDI data can be routed directly from Panorama or via the Panorama's USB MIDI driver. This allows it to be used as a MIDI interface by your DAW.
- X** Foot switch jack. MIDI-assignable, but by default controls sustain (pedal optional). Polarity is automatically detected on power up.
- Y** Expression Pedal jack for connecting expression pedal (optional).
- Z** Power on/off switch
- Æ** Aerodynamic shape designed for durability and ease of handling; also eliminates shock waveforms and reduces drag.

# POWER & SETUP

---

With Panorama unpacked and securely seated on a desk or keyboard stand, it's now time to connect the unit and get going. Let's start with power.

## Connecting to a Computer

Panorama is USB bus-powered which means you can power it from a connected computer. You will need two USB ports if you want to power the entire unit. Here is how:

- Plug in the USB cable (standard) to the USB jack on the back of Panorama (V) and plug the other end into a USB port on your computer.
- Plug in the USB cable with the Micro-B connector to the USB Aux Power In jack (U) on the back of Panorama and plug the other end into a USB port on your computer.
- Switch the power button on the back of Panorama to its **On** position (Z).

**Note:** You can power Panorama via a battery powered laptop but we recommend the use of your laptop's AC power supply during extended work sessions with Panorama.

With your computer switched on, Panorama will now go through its startup routine which includes calibrating the motorized fader.

Your computer's operating system will install the USB class driver, which will show up as three sets of MIDI ports inside most MIDI applications. If you plan to use Panorama as a regular USB MIDI controller, you will need to select the inputs and outputs labeled PANORAMA P4 in your application. For now, you can ignore the other two sets of MIDI ports.

**Note:** You can power all of Panorama via a single USB port except for the motorized fader. If you are short on USB ports you can use an external power supply (see below) or a USB hub, but make sure it's powered. Non-powered hubs are not recommended for use with Panorama.

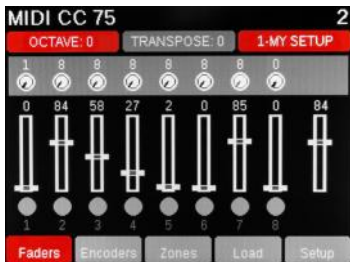
## Using an External Power Supply

If you have a standard USB power supply from any device that uses a USB Micro B connector, you can also power the unit by connecting the Micro-B USB cable to the USB Aux Power In jack (U) and the other end to the USB port on the power supply. This is the method to use if you need to operate Panorama without a computer.



## INTERNAL MODE: GETTING AROUND

Panorama has four modes, which is like having four different control surfaces (K): Mixer, Instrument, Transport and Internal modes. The first three modes are available when you operate Panorama with our dedicated communication protocols, such as the one for Reason (see pages 17-25). But let's start with Internal mode, which is the default mode if you are using Panorama as a traditional USB MIDI controller (either stand-alone or with a computer). The LED button for Internal mode is illuminated when the unit is in this mode and the display will look similar to the illustration below:



Move the faders and their values will update in the display as they move. Where controls are assigned to send a standard MIDI Controller message, pressing the **TOGGLE/VIEW** button (G) will display the Controller number assignments. Pressing the **TOGGLE/MUTE** button (J) will mute the MIDI output of the faders, so you can position them where you want them. Press again to unmute.

The buttons under the display (M) are used to navigate and activate functions within a menu. In this case, pressing the Encoders button (M2) will display the encoders' status. Press Zones (M3) and you are able to switch each of the four keyboard zones on or off. Load (M4) enables you to load any of the 20 presets as well as their associated Maps (see below). Finally the Setup menu (M5) contains the menus for Global parameters, Zone Edit, Control Edit and the Save functions. Use the Data encoder (O) to scroll through the menus and press Enter (M5) to select.

# INTERNAL MODE: GETTING AROUND

---

There is also a **FADER** button (E3) to select the menu options for the motorized fader and a **PADS** button (R). For more extensive details about these menus, please check the Support tab on our website. You need to register and log in as described earlier to gain access.

Above the pitch bend and modulation wheels you find the **OCTAVE** and **PB1/PB2** buttons (C).

The **OCTAVE** buttons allow you to shift the keyboard up +4 octaves or down -3 octaves. Pressing them both simultaneously will take you to the Global menu. This means you always have quick access to the most important setup functions at any time, in any mode. While the Global menu is open, parameter values can be changed using the Octave up/down buttons as well as the Data encoder (O).

Pressing the **PB1** and **PB2** buttons simultaneously activates the PB Assign menu. You can read more about that in the Panorama support pages on our website.

**Regarding Maps:** Panorama's preset structure is split into memory parts called Maps for keyboard, pads and F-keys individually, so it's possible to save or load each part separately or linked to an overall preset. You will see how powerful this can be when you want only one part of Panorama to change while you are working or performing.

# QUICK TIPS: GLOBAL SETTINGS

---

## About Quick Tips

In this section we aim to provide you with a set of quick tips for the most common operations of a MIDI controller. If you have experience with MIDI and controller keyboards, chances are that this is all you need to know to get going.

## Global Settings: Keyboard Velocity Curve

Simultaneously press the Octave up/down buttons (C) to enter or exit the Global menu. The default selection is Transpose so it's quick to change the Transpose setting while you play.

Use the menu arrow display buttons (M1-2) to locate the Keyboard Curve menu. Using the Data encoder (O) you can choose any of the 5 curves: Soft2, Soft1, Standard, Hard1, Hard2.

Soft2 requires the most force to reach the highest velocity value 127 and has an emphasis on the lower velocity values. By contrast, Hard2 requires the least force to reach velocity value 127. Soft1, Standard and Hard1 give you options in between each of these extremes. Select the curve that suits your playing style the best.

## Global Settings: Encoder Curve

Next select the menu Encoder Curve. This setting determines how quickly Panorama's encoders scroll through parameter values; the options are Slow, Standard and Fast. You may like Fast if you want to be able to go from 0-127 in less than 1 rotation. Standard allows you to do it in about 1 rotation and Slow requires more than one rotation. Select the curve you think might work best for you.

## Global Settings: MIDI Jack Source

Finally, select the MIDI Jack Source (Src). Here you can choose between USB and Internal. The USB option allows you to use the MIDI Out jack(W) as a USB MIDI interface, routing MIDI data from the Panorama P4 USB MIDI input driver to the MIDI output jack.

The Internal setting will route MIDI data straight from Panorama to the MIDI out jack(W).

When done, press the back arrow display button (M5) to exit or press the Internal mode button (K4).

# QUICK TIPS: ASSIGNING CONTROLS

## Internal Setup: Control Edit



Another option inside Setup is the Control Edit page. Its display looks similar to what is shown above. Moving or pressing any of the controls (faders, encoders, pads, buttons) while on this page will update the display to show their current settings. The default parameter selection is MIDI CC, so right away you can change the Controller number assignment for the most recently used control using the Data encoder (O). The change takes effect immediately, so you can check your receiving device or software to see that it responds correctly as you make changes.

Using the arrow display menu buttons (M1 or M2), select Message Type. Use the Data encoder (O) to review the options. Options vary depending on the type of control you have selected.

We have included a very flexible set of options for each selection. In the above screen you have the ability to assign the selected fader to send a particular MIDI CC# within a definable range on any MIDI channel, and then assign completely different values to the faders on either side if you like.

**Note:** QWERTY or ASCII messages can be assigned to any of the assignable buttons, but only with the Panorama driver installed. You can download it from our website once you have registered your product here: [www.nektartech.com/registration](http://www.nektartech.com/registration)

# QUICK TIPS: ZONES

## About Zones

The Panorama keyboard can be programmed in up to four zones. Each zone can cover anything from the entire MIDI note span to just one note. Zones can overlap to create up to four layers, each sending on a unique MIDI channel. Octave, Transpose and Program number can be programmed per zone, along with options to enable or disable Pitch bend, Modulation, Aftertouch, Sustain and Expression. Zones are stored as part of Panorama's five Keyboard Maps so you can load a setup at any time.

## Internal: Zones

Press the Internal mode button (K4) and select Zones by pressing the corresponding display menu button (M3). Here you can switch the four zones for the current keyboard map on or off using the display buttons (M1-4). If all zones are off, the keyboard automatically defaults to span the complete MIDI note range and transmits on the global MIDI channel. Press and hold a zone button to change the range. The Zones display can also be accessed by pressing PB1 and PB2 simultaneously, then M4.



## Internal Setup: Zone Edit

From Zone Edit mode, program the zone range by pressing the display button labeled "Range" (M4). Press a key on the keyboard to select the low key in the zone range, and again to select the highest key. Use the Octave buttons to shift the keyboard up and down to select any note in the MIDI note range.

Press the display menu buttons (M1-2) to step through the menu options available for each zone and change settings to your preference. To program the next zone, simply press the Zone> button (M3).

# QUICK TIPS: MOTORIZED FADER

---

## About the Motorized Fader

The motorized fader section is designed to work with our dedicated communication protocols, where it gives immediate access to channel strip functions for the current sequencer track. The fader motor itself does not function in Internal mode; however, while Panorama is in Internal mode the fader may still be used manually as an assignable MIDI controller. The **SOLO** and **MUTE** buttons are also MIDI-assignable as described below.

## Motor Requirements

To take full advantage of Panorama's motorized fader you need two things:

- Parameter feedback provided by our dedicated communication protocols.
- Enough power to drive the fader's motor as described on page 8 in Power & Setup

Without both of these criteria satisfied, the motorized fader will act as a traditional manual fader, which is still very useful.

## Fader Menu

Press the **FADER** button (E3) to enter the Fader menu. Used in Internal mode, this menu works like a General MIDI Level 2 (GM2) channel strip.

By default, the fader controls the volume (MIDI CC #7). And while on this page you can use the Data encoder (O) to select GM2 parameters such as Pan, Send 1 (Reverb CC#91) and Send 2 (Chorus CC#93). Use the display menu buttons (M1-2) to select which parameter is being controlled by the Data encoder.

The MIDI channel on which the fader and the GM2 controls transmit may be selected by pressing one of the Channel up/down buttons (M3-4). **MUTE** and **SOLO** are not part of the GM2 specifications so you may have to assign them according to the requirements of the software you use.

To change the MIDI CC# assignments for these controls, as with any other, access the Control Edit page from the Internal mode Setup menu. Then move the fader or press one of the buttons to call up the page you want.

# QUICK TIPS: PADS

---

## About Pads

Panorama's twelve pads and associated menus are designed as a powerful percussive performance instrument to complement the keyboard. Pad assignments are either automatic (using our dedicated communication protocols) or set up quickly through the "Learn" function and the intuitive menus. With features such as Scale, Octave and Transpose we encourage you to try new combinations of note assignments "on the fly" or simply play percussive melody lines on the pads. In addition, you can save and load to any of the 20 Pad Map memory locations.

## Changing Velocity Response

The pads have seven velocity response options: Soft, Standard, Hard, 2-Level, 3-Level, 4-Level and Fixed. Assignments are for all 12 pads so you can quickly change their response in real time. To do that, press the Pads button (R) and scroll through the options using the Data encoder (O).

## Assigning Notes to Pads

Press the Pads button (R) to enter the pads menu, then select Pad-Map with the associated display menu button (M1). Next select Note-learn (M1) and tap on the pad for which you want to assign a note. The display highlights the selected pad in red. Now just play the key on the keyboard that you want to assign to the pad. Select a new pad followed by a note on the keyboard and keep going until you are done assigning. Then simply switch the Note-learn function off (M1).

**Note:** Pressure is automatically switched off when using the Note-learn function.

## Scale

The Scale menu is a great way to try different combinations of MIDI notes from a set of percussion sounds that are spread out over the keyboard, to playing a melodic part on pitched percussion using the pads. Press Pads (R), followed by the Scale display menu button (M2). Use the Data encoder to select the scale you want (O). You will see the center of the Info-bar update from Chromatic (default) to the names of other scales as you select them. The pads update in real time so you can try out the selected scale immediately.

Select a new root note (the starting point of your scale) by pressing the menu button labeled "Root Learn" (M1) and press a key on the keyboard. You can also use the Octave and Transpose functions.

# QUICK TIPS: PADS

## Velocity Spread

This function spreads a selected pad's note assignment across all 12 pads, with each pad assigned to the same note but with independently adjustable fixed-velocity assignments.

Press Pads (R), then tap a pad to select it (S). Now activate the Velocity Spread menu by pressing the menu display button "Vel-Spread" (M3). Playing the pads will now play the same note with various velocity values as illustrated in the image below.



To change the velocity level for a pad, simply select it by tapping the pad and use the Data encoder (O) to change the value.

Velocity Scale is available in the Pads home page and also in the Pad-Map and Scale menus, so you can always switch to it no matter which of those menus is active.

## Advanced Pads Programming

Pads can also be used to trigger ASCII and MIDI commands or send MIDI CC values via pressure. We consider this a more advanced level of programming not easily done in real time. To create a setup like this, program the Pads using the Control Edit menu as described on page 12.



# REASON: DRIVER & DOWNLOAD

---

## About the Panorama Driver

The Panorama driver is required to use our dedicated communication protocol for Reason. If Reason is not already installed on your computer, we recommend you install Reason first and our driver second.

If you don't own Reason, you can try a demo of the full version by visiting Propellerhead Software's website: <http://www.propellerheads.se/download/>

Once installed, you can run the program in demo mode and see for yourself how well Reason and Panorama interact.

**Note:** Panorama's dedicated communication protocol is compatible with Record 1.5, Reason 5, Reason 6 and up. Older versions are not supported.

## Downloading the Reason Driver

The Reason driver for Panorama can be downloaded from <http://www.nektartech.com/registration>. Follow the online instructions to register, download and install the Panorama driver.

# REASON: SETUP

---

With Reason and the Panorama driver installed, connect the Panorama keyboard to your computer via USB and set its power switch to On. Wait until the OS has recognized Panorama, then follow these steps:

- Launch Reason
- Select the Preference menu in Reason and click on the Control Surfaces tab
- Click the button labeled “Auto-detect surfaces”

Once complete Reason should have found two control surfaces: Nektar Panorama and Nektar Panorama Mixer Mode.

**Note:** If you are installing Reason for the first time, Reason will request permission to search automatically for a Master Keyboard. If you do this, Reason will find only Nektar Panorama because our Mixer Mode control surface does not contain a keyboard. You must follow the steps above to ensure both control surfaces are found.

Reason and Panorama are now connected. You will see the following message on Panorama’s display:

*“To use Mixer Mode, please lock Panorama Mixer Control Surface to a Mixer device.*

*Locking to the Master Section is most useful. You can also lock to any Mixer device in the rack and the ReGroove Mixer. Alternatively, select Instrument, Transport or Internal mode.”*

To lock to the Reason 6 mixer, navigate to the Options menu and select “Surface Locking...”. For the Surface select “Nektar Panorama Mixer”, and for “Lock to Device” select “Master Section”.

If you are using Reason 5, you can lock Mixer mode to the 14:2 mixer and control it the same way as the larger mixer in Reason 6. The rest of this guide assumes you are using Reason 6.

That’s it; you are now ready to experience Panorama communicating with the power of Reason.

**Note:** The “Lock Nektar Panorama Mixer Mode to this device” setting is stored with your song so you don’t have to set this up every time if you save the setting you prefer in your default song.

# REASON: GETTING AROUND

---

## About Panorama's Reason Implementation

Panorama's dedicated communication protocol for Reason is extremely comprehensive. And if you know Reason, it's easy to understand how it all works...because you already know how Reason works! In the following we'll give you a starting point for exploring Panorama, which may be all you need.

## Modes and Navigation

By pressing the Mode navigation buttons (K) you change the assignments of Panorama's controls at the push of a button. It's like having four control surfaces in one:



**Mixer** — Assigns all controls to the Reason mixer.

**Instrument** — Assigns controls to the device on your sequencer track. In most cases, this will be an instrument, but it's also how you control any of Reason's effects.

**Transport** — Controls functions in Reason's transport menu including current song position and locator points.

**Internal** — Uses Panorama's internal MIDI controller functions so you can jump out of our dedicated Reason protocol and use Panorama as a traditional MIDI controller.

Regardless of where you are in Panorama's menu structure, you can always press a mode button (K) to jump out of the current menu to a new mode. The last menu of a mode is remembered, so pressing the mode button once from any other mode will take you back to the remembered menu; pressing it twice will take you to the mode home page.

# REASON: GETTING AROUND

---

## Info-Bar (Red/Gray/Red)

The display Info-Bar (Red/Gray/Red) provides the following important current status information for the mode home pages:

Sequencer Track Name / Mixer Channel Number / Device Name

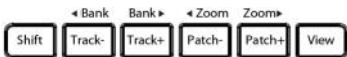


Deeper in the menu structure, the Info-Bar changes to:

Mixer mode: Sequencer Track Name / Mixer Channel Number / Current Menu

Instrument mode: Current Patch Name / Device Name / Current Menu

## Changing Track, Patch and Mixer Bank



The navigation buttons allow you to make the following navigational changes:

Track -/+ : Changes the current sequencer track

Patch -/+ : Changes the patch (or preset) of the instrument device assigned to the current sequencer track

View : Changes the display view on your computer to show Mixer in Mixer mode, Rack in Instrument mode and Sequencer in Transport mode

Bank <> : Shifts the current selection of eight mixer channels in Mixer mode so the fader group assignments are changed, for example, from channels 1-8 to channels 9-16

Zoom <> : controls the magnification of sequencer tracks when the sequencer is in view.

# REASON: MIXER MODE

In Mixer mode, the first eight faders (H) control eight mixer channels at a time, while the corresponding encoders (F) control the Pan position and the LED buttons (I) act as Channel Select buttons.

You can change the assignment of the encoders by pressing the **TOGGLE/VIEW** button (G) to step through Pan, Width and Sends 1-8.

By pressing the **TOGGLE/MUTE** button (J) to the right of the LED buttons, you also change their assigned function by stepping through Select, Mute and Solo.



The Encoder group (P) to the right of the display is assigned by default to control EQ for the currently selected channel. Using the LED buttons (I) as Select buttons, you can select a new mixer channel without changing your current sequencer track. This is useful, say, if you want to tweak the EQ on a kick drum track while still playing a bass sound from the keyboard.

To view the EQ parameters, press the display navigation button labeled EQ (M1), or select any of the other display buttons for other menus. The Menu button (M5) gives you quick access to all mixer menus, including the Master section.

**Note:** We recommend you only rename sequencer tracks and not mixer channels. By only naming sequencer tracks, mixer channels will display the same name as the track name. If you name mixer channels independently, you may experience inaccurate track information in the info bar.

# REASON: INSTRUMENT MODE

Instrument mode controls the device assigned to the currently selected sequencer track. Changing tracks will therefore immediately update the assignments of all controls.

The Instrument home page is designed to provide the information and experience of a hardware workstation. The large character field shows the current patch name of the device, and the grid below that shows the parameters and values assigned to the encoder group (P). And if the current device has envelopes, the fader group will be assigned to Amp and Filter envelopes by default.



The first parameters you encounter are the ones we considered most useful, and they've been selected from different menus. But you can edit any of the device's parameters by pressing the Menu button (M5), which will activate the scroll menu. From here you can access every menu in the selected device.

To control devices in the Effects and Other Category, you will need to create a track for that device. This can be done by right-clicking on the device in the rack and selecting "Create track for (device name)".

# REASON: TRANSPORT MODE

The transport buttons (Q) are always available in all three Reason modes so you can control the main transport functions at any time.



Activating Transport mode expands your navigational options considerably, with control over locators, tempo, click level, pre-count, song position and more. In addition, the real-time clock tells you the current playback position in your arrangement so you always know where you are.

The layout of the Transport home page is similar to that of Instrument mode, with the clock readout in large characters and the grid indicating the assignments of each of the controls in the encoder group (P). The Menu buttons (M1-5) offer eight essential Transport features on two pages. For example, on the first page the Clock button (M4) toggles the clock readout between real time and bars and beats.



If you are into loop-based recording, try the display buttons labeled Loop> and <Loop on the second page of the Transport menu. Pressing one of these buttons automatically moves your L/R location points by the number of bars between the two points, creating a new loop location with one button push.

# REASON: REMOTE OVERRIDE

---

Transport mode does not use the faders, encoders or buttons to the left of the display, so they are conveniently available for you to assign any parameter you want using Reason's Edit Remote Override Mapping function. This is great if you want parameters for different devices accessible as one group of controls, at any time. And it's easy to set up, too:

1. Enter Transport mode
2. Right-click on the parameter on the Reason device you want to control
3. Select "Edit Remote Override Mapping"
4. In the popup menu, make sure "Learn from control surface input" is ticked
5. Move a control, such as encoder 1 (F1)
6. Click OK in the dialogue box.

The use of Remote Override Mapping does not affect the assignments in Panorama and can be different from song to song.

**Note:** We recommend that you don't use Remote Override Mapping in Mixer or Instrument mode.



# REASON: MOTORIZED FADER

---

Panorama's motorized fader is assigned by default to the mixer volume of the currently selected track. When you change sequencer tracks, the mixer channel selection also changes, and the motorized fader section and its controls follow that selection. This means you always have access to volume control, solo and mute functions for the selected track on the left hand side, no matter which of the three Reason modes is active on Panorama.

Pressing the Fader button (E) gives you more options, such as assigning and locking the motorized fader to a specific mixer channel, plus the ability to change pan position or the various send levels using the data encoder (O), which is done by using the Param button (M2) to step through the available options.

Other menu buttons located under the Fader button will allow you to select and control parameters within the Master or Control Room sections.

**Note:** In Reason, it is possible to have tracks in the sequencer that do not have corresponding mixer channels (for example, when you create a track for an effect). When such a track is selected, the motorized fader does not change its target channel.

# REASON: USING PADS

---

The pads are a great way not only to play drum and percussion sounds, but also to compose interesting new phrases for synths and traditional instruments.

We already described how the pads work in Quick Tips, and you can use this functionality in any of the Reason modes. For your convenience, though, we've also pre-mapped instrument devices such as Kong, ReDrum and Dr. Octo Rex to the pads by default. In some of the menus the pads are also used to change parameters such as Solo and Mute. When controlling devices that have built-in sequencers, the pads can be used to select Sequences and program Beats/Steps. However, if you prefer to use the pads' internal functionality, simply press the Pads button (R) in any mode.

# CLEANING & MAINTENANCE

---

If you want to keep Panorama pristine, you'll need to clean it occasionally. We recommend you use a moisture-free air duster or electronics spray to clear away any surface dust. Then use electronics dry cloth or the included lint-free cloth to polish the surface and remove any finger marks.

**Note:** Do not use any abrasive materials to clean the surface as this may leave scratch marks.

# FACTORY RESET

---

Performing a complete factory reset will erase all presets and maps and return the unit to its default factory state. Make sure to back up your presets and maps first! For details on backup, make sure to register your product to gain access to our online documentation.

Here is how you perform a factory reset:

- Make sure Panorama's power switch (Z) is set to the Off position
- Press and hold the Patch- and Patch+ buttons (N) and set the power switch to On.

# ABOUT

---

The About page tells you what firmware and hardware versions are currently in your unit. To activate, select Internal mode and press the two display buttons M1 and M2 simultaneously.

To exit, press M5.

**Note:** This equipment has been tested and found to comply with the limits for a Class B digital device, pursuant to part 15 of the FCC Rules. These limits are designed to provide reasonable protection against harmful interference in a residential installation. This equipment generates, uses and can radiate radio frequency energy and, if not installed and used in accordance with the instructions, may cause harmful interference to radio communications. However, there is no guarantee that interference will not occur in a particular installation. If this equipment does cause harmful interference to radio or television reception, which can be determined by turning the equipment off and on, the user is encouraged to try to correct the interference by one or more of the following measures:

- Reorient or relocate the receiving antenna.
- Increase the separation between the equipment and receiver.
- Connect the equipment into an outlet on a circuit different from that to which the receiver is connected.
- Consult the dealer or an experienced radio/TV technician for help.



**WARNING:** Dispose of product securely, avoiding exposure to food sources and ground water. Only use the product in accordance with the instructions.

### **Prop 65 Notice**

The state of California wants you to know the following:

"WARNING: This product contains a chemical known to the State of California to cause cancer, birth defects or other reproductive harm."

Dispose of the product in an environmentally safe way to avoid exposure to drinking water or food sources. The product is safe in regular use but take precautions during service.

Panorama firmware, software and documentation are the property of Nektar Technology, Inc and subject to a License Agreement.

© 2012 Nektar Technology, Inc. All specifications subject to change without notice. Nektar is a trademark of Nektar Technology, Inc. Reason is a trademark of Propellerhead Software AB.

